



Fort Wayne Photographers Club - 2023 February Competition Advanced

# Nature-PSA Rules Apply



Antarctic Peninnsula - Springtime

Top Choice by Judge

James Wulpi



Upper Meigs Falls

First

Thomas Sprunger





Fort Wayne Photographers Club - 2023 February Competition Advanced

# Nature-PSA Rules Apply



Alpine Lake Morning - Yellowstone

Second

Mike Koenig



Eider and Ash

Third

Lawrence Gaskill



Fort Wayne Photographers Club - 2023 February Competition Advanced

# Family



Christmas Magic  
Top Choice by Judge  
Eric Pepple



Big Enough For Jeans  
First  
Denise McQuillan





# Family



Grandchildren at Disney with Minnie

Second

Eugene McQuillan



Family (and Community)

Third

James Wulpi



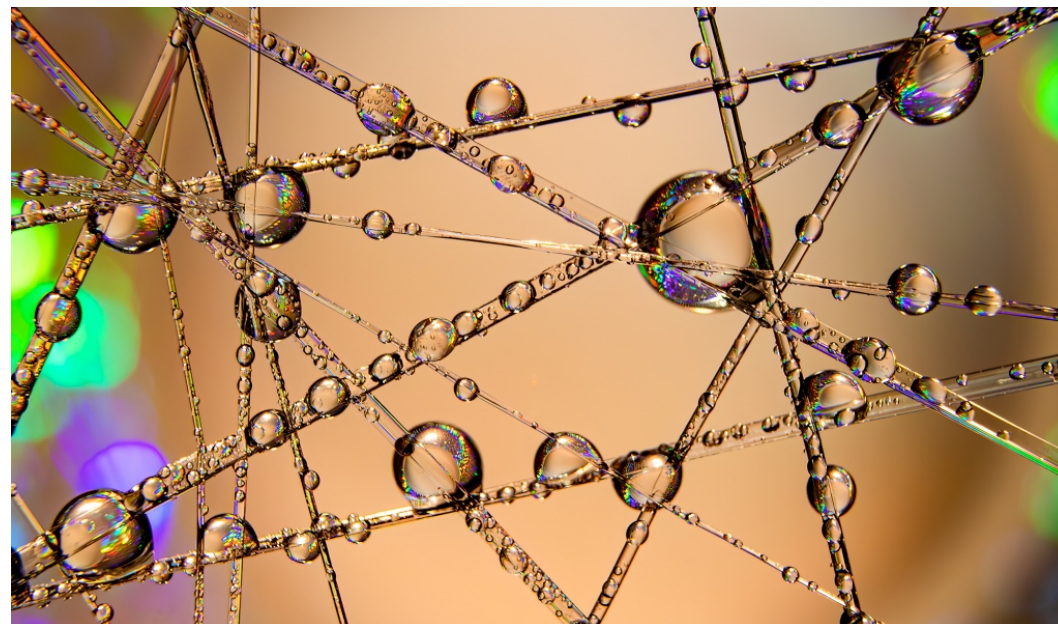


Fort Wayne Photographers Club - 2023 February Competition Advanced

# Open-No PSA Nature



Rainbow Falls  
Top Choice by Judge  
Thomas Sprunger



Water with Bling  
First  
Denise McQuillan





Fort Wayne Photographers Club - 2023 February Competition Advanced

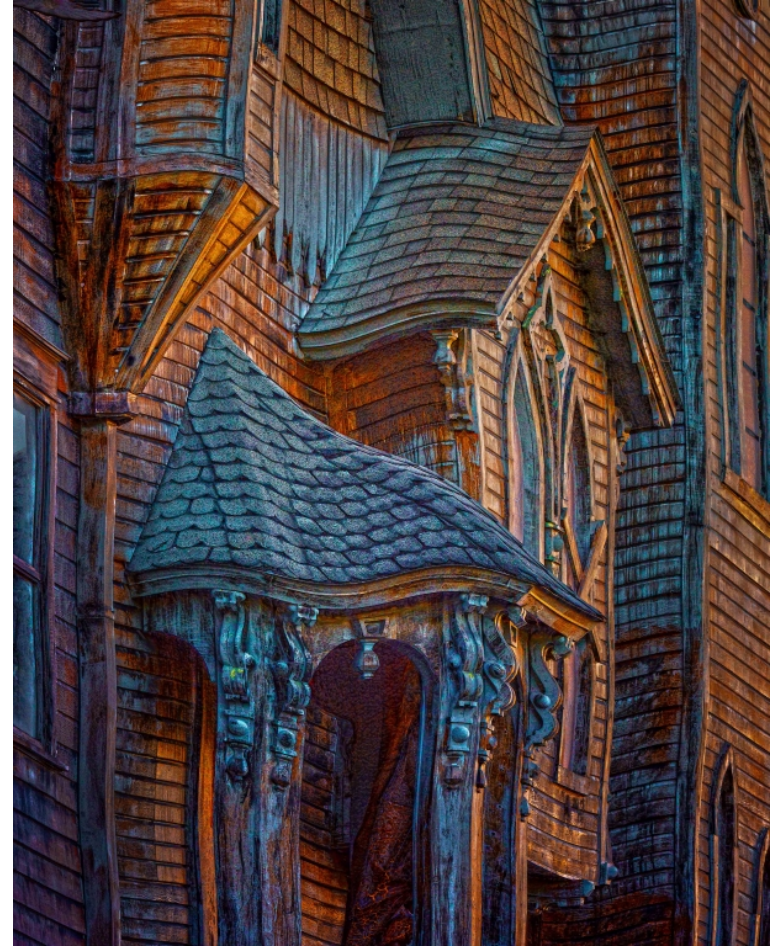
# Open-No PSA Nature



Farm Scapes

Second

Lawrence Gaskill



Greetings

Third

Terry Musclow





Fort Wayne Photographers Club - 2023 February Competition Advanced

# Open-No PSA Nature



Swan - Eagle Marsh  
Honorable Mention  
Bill Christie



Fort Wayne Photographers Club - 2023 February Competition Advanced

# Negative Space



The Old Man and The Sea

Top Choice by Judge

Mike Koenig



Circle of Fun

First

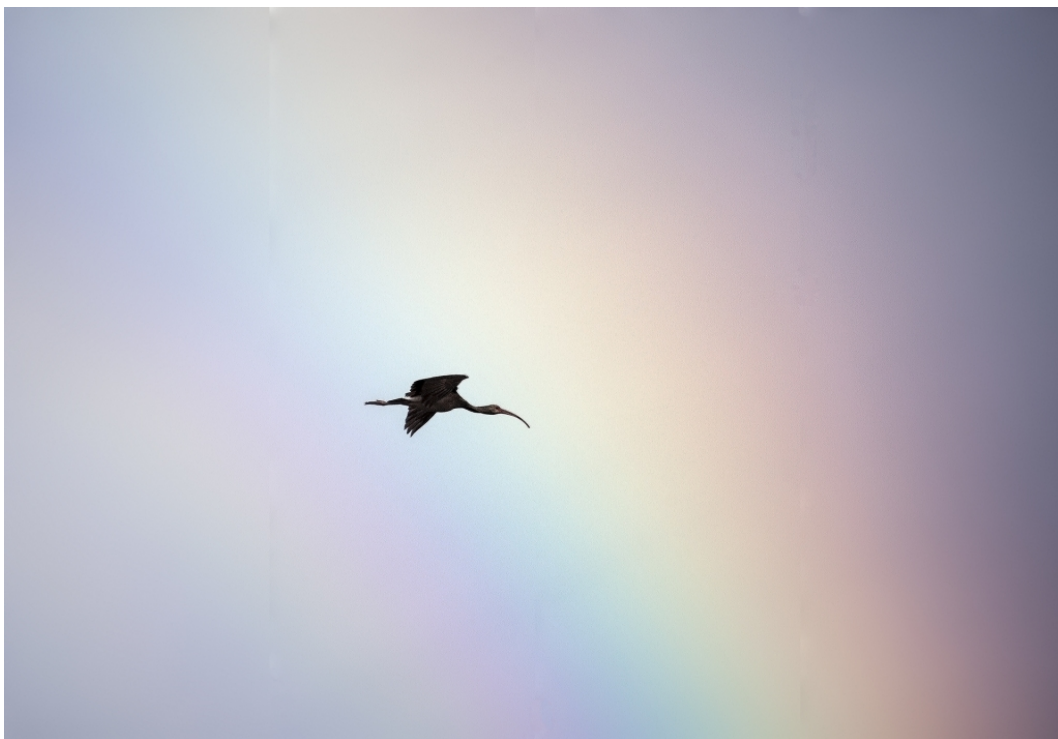
Wolfgang Koger





Fort Wayne Photographers Club - 2023 February Competition Advanced

# Negative Space



A Flight Through a Rainbow

Second

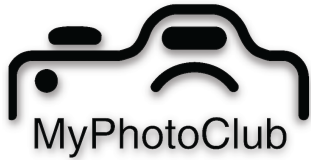
Eugene McQuillan



Winter Beachcombing

Third

Michelle Cambron



## *An all-encompassing web-based solution for your photography club, competition, or association*

### ***MyPhotoClub can provide a:***

- complete website for your photography club
- competition entry portal alongside your existing club site
- dedicated site for your photography exhibition - Local, National or International
- site for your Interclub competitions and convention. Competitions can be club or individual entries.

### ***MyPhotoClub currently provides sites for:***

- Edinburgh International Exhibition of Photography
- Maitland International Salon of Photography
- Australian Photographic Society national competitions
- New South Wales Federation of Camera Clubs
- Many national competitions within Australia
- Over 40 camera clubs across Australia, NZ and the USA.

*“This platform is very comprehensive, it has pedigree, having been used to run the Maitland and Lake Macquarie Internationals. Colin was very responsive and helped to get us and running efficiently, quickly and smoothly.”*

*- Alexander Berndt - Salon Chair, Edinburgh International*

### ***Simple pricing structure that caters for large and small clients:***

- Clubs pay an annual subscription fee per member per annum
- Competitions pay per entrant fee.

### ***All MyPhotoClub sites offer these features:***

- Online image uploading and storage
- Complete online competition life cycle management:
  - Judging/assessment:
    - A single judge entering comments and awards
    - Multiple judges assigning scores
  - Report card generation, including judges comments
  - Customisable award certificates
  - PDF catalog generation
- Flexible entry fee management

### ***Additional features for clubs:***

- Simple yet effective membership management
- Members biographies, commenting & galleries within the privacy of the club's webspace.
- Simple and efficient communication to members through posts to the website with automated email messaging to members
- Reusability - nominate previously uploaded images into any site hosted by MyPhotoClub
- Flexible usage of the upload system for non competition related activities such as image assessment, editing challenges and field trips.

*All clubs get full use of their site for the first six months for free with no obligation.*

*Visit our website: [myphotoclub.com.au](http://myphotoclub.com.au) email: [colin@myphotoclub.com.au](mailto:colin@myphotoclub.com.au) phone +61 419 624 347*